

VisSim Viewer™ 7

Run-Time, View-Only VisSim

VisSim Viewer is a run-time, view-only version of Professional VisSim for sharing block diagram models with individuals not licensed to use VisSim. Engineers can distribute their models together with a licensed copy of the Viewer to such recipients as clients, fellow engineers, sales representatives, and operator trainees.

What you can do with the Viewer

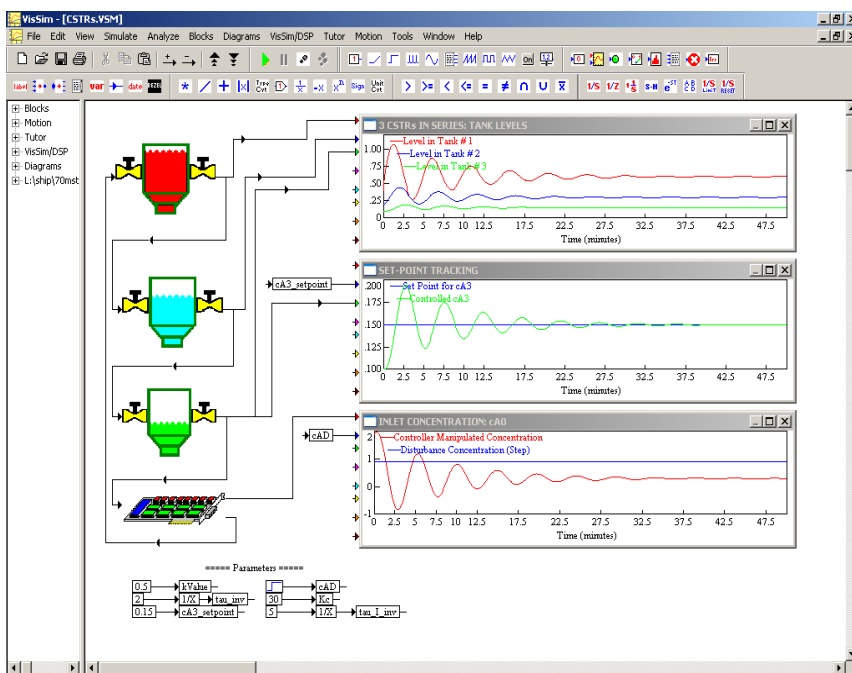
With the Viewer, recipients can open, view, and simulate VisSim models of any size; change block and simulation parameters to test different design scenarios; customize plots, strip charts and meter blocks to present simulation data in different formats; and make printed copies of VisSim models for presentations or archival purposes.

Protecting your models

The Viewer preserves model integrity by prohibiting recipients from changing wiring and block diagram structure. Moreover, sensitive information can be locked in password-protected compound and embed blocks, enabling engineers to share confidential designs without the fear of a security breach.

Free copies of the Viewer

A copy of the Viewer is included with Professional VisSim and VisSim/Comm.



Setpoint control of reactant concentration of three CSTRs in series. The Viewer design environment is enhanced by allowing the interactive modification of parameter values, like the Setpoint variable in the above diagram. The plots provide immediate visual feedback of system behavior.

Highlights

- View and simulate any size VisSim diagram
 - Interactive, batch, auto-restart, and single-step execution modes
- Perform "what-if" scenarios
 - Alter block and simulation parameters
 - Optimize gains
 - Observe results immediately on screen
- Customize histogram, light, meter, plot, and stripChart blocks
- Save block and simulation parameter changes
- Preserve block and wiring structure
- Print block diagrams
- Alter screen colors and fonts
- Compatible with VisSim add-on products

Technical Specifications

Max. blocks	500K
Max. plots	500K
Max. integrators	500K
Max. data points	200K
Block nesting	16K
Integration methods	9
Numeric precision	IEEE 64-bit
Data file format	ASCII, .MAT, .M, .WAV
ABCD state-space format	.MAT, .M

System Requirements

- Windows 2000, Me, XP, or Vista
- 8MB RAM
- 4MB disk space