

VisSim/Knobs & Gauges™

Graphical Instruments for Displaying Signals

Block Set

- Compasses: dual, sliding, standard
- Gauges: angular, angular log, linear, sliding, thermometer
- Indicators: 7-segment analog, binary, clock character, hexadecimal, integer; LED arrow, diamond, matrix, bar, rectangle, round, spiral
- Knob and Slider
- Percent-Based: bar, pie chart
- Switches: LED, lever, panel, quad, rocker, rotary, slider, toggle; mode combo, 3-way rocker
- Tanks and Valves: motor, pipe, tank, value
- Other: analog input and output, gradient, integer input, LCD matrix, odometer, phone pad, spectrum, rotation

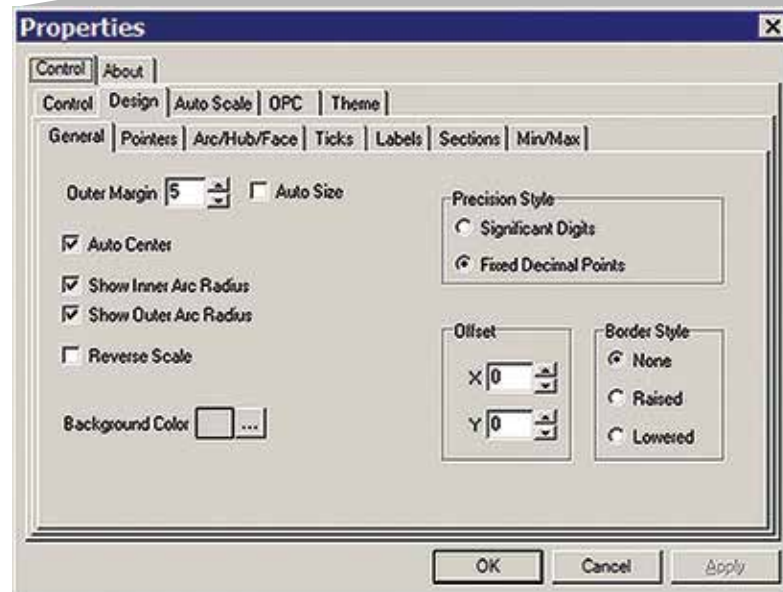
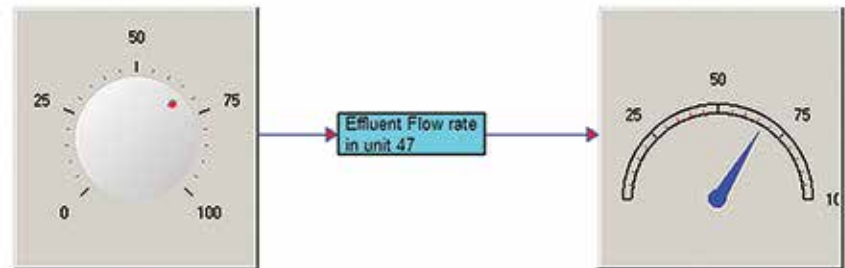
System Requirements

- Professional VisSim v9.0
- Windows XP, Vista, 7, or 8
- 128 MB RAM
- 125 MB hard disk space

Introduction

VisSim/Knobs and Gauges is a set of blocks that provide graphical displays for monitoring signals. With VisSim/Knobs and Gauges, you can design realistic instrumentation panels that increase the visibility and impact of your VisSim models.

The customizable blocks can be used for scientific, engineering, medical, oil and gas, maritime, semiconductor, factory automation, aerospace, telecommunications, military, building and home automation, power systems, robotics, and hundreds of other types of applications.



Flow rate displayed in an angular gauge. The tic marks, pointer, and range of the angular display gauge are customized through its Properties dialog box.